

Dell Trial / Evaluation Licenses for iDRAC, CMC, and OpenManage Essentials

Licenses and Installation



Trial/Evaluation licenses for Dell OpenManage products

- Thank you for your interest in Dell OpenManage tools. This file contains this quick reference on how to install trial/evaluation licenses in the GUI, along with the following evaluation licenses:
 - The 30 day trial license for 12G iDRAC7 Enterprise
 - The 30 day trial license for 13G iDRAC8 Enterprise
 - The 30 day trial license for FX2 CMC Enterprise
 - The 30 day trial license for VRTX CMC Enterprise
 - The 30 day trial license for the FM120 iDRAC7 Enterprise (for use in FX2 chassis)
 - The 90 day trial license for OpenManage Essentials (OME) Server Configuration Management
 - OME Server Configuration Management license will work with either Express or Enterprise licenses of iDRAC7 or iDRAC8
 - OME Server Configuration Management License allows for a 90 day period to fully test and experience all the features.
- Understanding Dell OpenManage Trial/Evaluation Licenses
 - Trial licenses are fully featured
 - Trial licenses are only good for the times noted.
 - Trial licenses may not be more than once or “chained” together
 - Any settings made using the Trial license will be preserved if a perpetual license is installed before the license expires
 - Please set a reminder in your calendar prior to the license expiration
- Screen shots of how to install license on the following slides



iDRAC and OME license installation



Integrated Dell Remote
Access Controller 7

Enterprise

Support | About | Logout

System

PowerEdge R820
root, Admin

- Overview
- Server
- Logs
- Power / Thermal
- Virtual Console
- Alerts
- Setup
- Troubleshooting
- Licenses**
- Intrusion
- iDRAC Settings
- Hardware
- Storage
- Host OS

Licenses

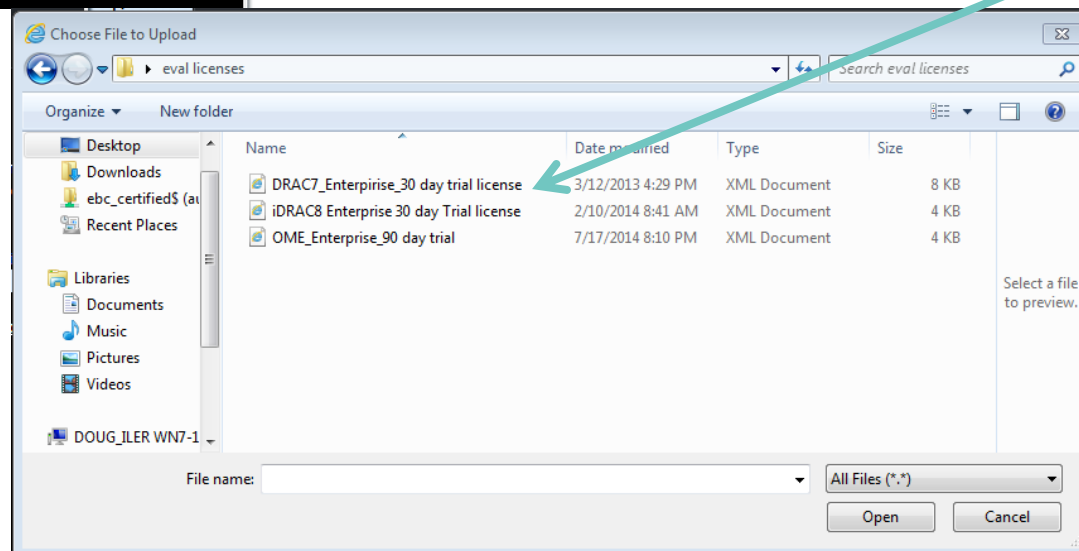
Licensing



The embedded license manager is responsible for discovering and managing licensable hardware devices. This page represents the discovered devices and licenses associated with this system. From this page, you can manage (import, delete, replace, or export) the digital licenses associated with the discovered hardware. Note that detailed license information is not available for the default license version. For 600 or higher series servers and blades, Express features are standard. For 500 or below series servers and blades, Basic Management features are standard.

To manage changes to or purchase new licenses visit the [License Self-Service Portal](#)

	Status	Device	Device Description	License Options
		iDRAC	iDRAC7	<div>Import <input type="button" value="Browse..."/></div> <div>Cancel <input type="button" value="Apply"/></div>



CMC license installation

CMC-003X4AV
AEB_dev_board_x01
root, Administrator

Properties | **Setup** | Power | Logs | Network | User Authentication | Alerts | Troubleshooting | Update | Security

General | Date/Time | Chassis Backups | **Licenses**

Licensing

Instructions

The embedded license manager is used for discovering and managing licensable hardware devices. This page displays the discovered devices and licenses associated with this system. From this page, you can manage (import, delete, replace, or export) the digital licenses associated with the discovered hardware. To manage changes to or purchase new licenses visit the [License Self-Service Portal](#)

	Status	Device	Description	Options
		CMC.Integrated.1	Chassis Management Controller for AEB_dev_board_x01	<div>Import </div>

Choose File to Upload

File name: VRTX-Ent-Eval.xml | All Files (*.*)